



TelcoBASE

# *Telco*BASE

## Knowledge-sharing across multiple offices worldwide



IMIssoft are pleased to introduce **TelcoBASE**, a power packed tool that presents the Management with an integrated total perspective of activities related to Microwave and Cellular Network Management.

**TelcoBASE** provides a common resource for inputting, sharing and managing critical information, documents for multiple sites at multiple locations.

IMIssoft





TelcoBASE

TelcoBASE is a unique management tool that simplifies management of multiple networks and activities. Using an intuitive interface that hosts geographical locations of projects and sites, TelcoBASE:

- Makes access quicker and faster to relevant information concerning Networks.
- Improves asset management, maintenance management, warehouse management and other operations related functions.
- Offers high levels of security and personalized access to users.
- Streamlines knowledge sharing across the organisation.
- Drastically reduces costs of distributing information to executives and staff.
- Presents Network related information in a coherent, timely mannethrough the use of its own communications channel.

IMIsoft

### The Solution

TelcoBASE uses Internet Embedded Technology, integrating all data related to communication sites at different locations. This centralised data repository provides instantaneous access to key information for authorised users of the system. TelcoBASE provides a single point of interaction for different teams working on different sites simultaneously facilitating the Top Management to monitor various activities.

This Internet embedded client -server technology provides data access to users on the corporate LAN and on the Internet, thus extending the boundaries to external partners and advisors.

TelcoBASE hosts a variety of features, for example: deciding on geographical locations of sites, site design and management with the Site Planner, creating a centralized task repository with the Task Manager, effective scheduling of tasks conforming with the popular JIT (Just-In- Time) philosophy, document management with the Document Container, maintenance management with the Preventive Maintenance Scheduler and more. Effective reporting tools ensure that information is garnered from various quarters of TelcoBASE to provide a complete, coherent and comprehensive picture for the Top Management.

The TelcoBASE Server maintains the database integrity and provides access to authorised users through the TelcoBASE client. A highly secure protocol between server and client ensures that only authorised users, defined by the system administrator can access information. TelcoBASE supports a wide variety of document types from the Microsoft Office Suite formats to AutoCAD drawings, PDF formats, images and audio/video files. Each of these document types are supported by an import/export capability to accommodate working practices with other tools.

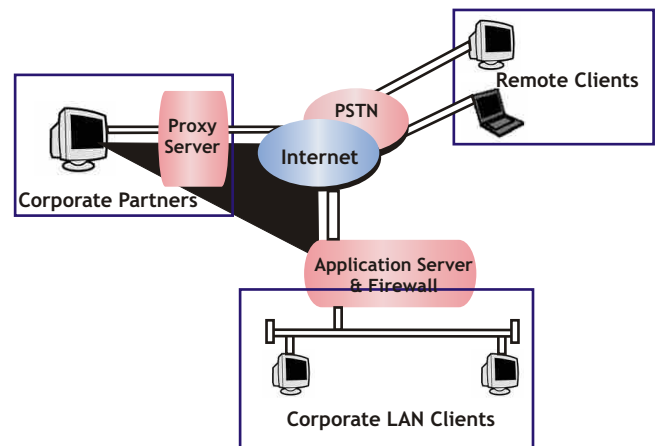
### Security

TelcoBASE is a secure system. It protects sensitive information from intrusion by unauthorised access and provides classifications of use to determine appropriate access by those authorised by the system administrator. Operating behind a corporate firewall, client-server licensing is managed by the system administrator, who also determines a specific non-disclosed connection port for the application. The client license is encoded with the IP address and a non-disclosed port number. A virtual private network by virtue of this security mechanism supports Internet users of TelcoBASE, who are outside the corporate firewall.

Internet users MUST use the TelcoBASE client and be registered users to a specific TelcoBASE server. Any other Internet request will be rejected. TelcoBASE provides a matrix composition of personal data access. This facilitates assigning functional and company level permissions to view and modify the database. It is possible to restrict or allow access for company and third party contributors to any of the information in TelcoBASE. This means, for each user the administrator determines the functions and the companies whose data can be accessed.

### Conectivtny

The following picture illustrates the possible connection scenarios supported by TelcoBASE.



## Key Feature Summary

The following table summaries examples of the functionality and types of information and accessible through the TelcoBASE client. The list is not exhaustive and can be tailored to customer specifications.

GIS Integration	Displays geographical locations of networks and sites. Associated with functionality such as retrieving site details, zooming in and other information right from the desktop.
Network & Site Scheduler	Exporting/Importing Tasks to MS-Project. Links to Task Manager (a central repository for tasks) and Telecom tasks. Graphs such as Schedule Gantt chart, CPM chart, Activity Line graph, Overall Progress Graph and more. Dependencies
Site Planner	Links to Document Container, Object library and Maintenance. Grids and Layers for better precision over placing equipment on the site planner Dimensioning Equipment Reports
Maintenance	Automatically covers all equipment present in different sites under maintenance. Downtime, Work time and nature of maintenance Frequency of maintenance Approval
Finance	Preparation of Invoices, Approval by authorized users Constant update to users on status of the invoice.
Daily Entry	Minimal input by users High levels of security ensuring inputs only by authorized users Daily Entry Reports and graphs
Warehouse	Automates all warehouse functions such as Purchase Requisition, Purchase Order, Goods Inspection and Goods received Note. Facilitates inter-warehouse transfers Automatic updating of stock.
Communications	The Mail system in TelcoBASE facilitates a communications channel between the TelcoBASE network and even external users. E-Alerts allow you to send messages to specific users at specified time-gaps.

## System Attributes

### Security

Information accessible to approved users, using stringent security methodology

### Data Integration

Operates using an SQL database  
Integrates with ODBC databases  
Can be extended to support other/legacy databases

### User Features

Intuitive and powerful client interface  
Rapid data access and search facilities  
Multi-user type configuration

### Media

Text  
Documents (WORD,POWERPOINT,Excel,PDF,HTML)  
Photographic Information (GIF,JPEG)  
Graphics  
Audio and Video

### Input/Output Formats

Manual Input  
Scanned Input  
File Transfer Input  
Live Data Feed Input  
Printed Output  
E-mail output

### Example Queries:

Individual Contacts  
Events  
Geographies  
Markets  
Specific Documents

### Alarm and Reporting Examples:

Alarms on any event eg: Maintenance  
Timeline Reports Details of significant events

### System Requirements

Server  
1GHz Intel Pentium III processor  
512MB RAM  
CD-ROM drive  
Internet Explorer 5 or above  
System software on the server:  
-Windows NT Server 4.0 [SP 3 or higher ]  
-SQL Server 7.0 or later  
-Internet Information Server 4.0 or above.

### Client

400 MHz Intel Pentium III processor  
128 MB RAM  
CD-ROM drive  
Internet Explorer 5 or above  
System software on the server:  
Windows NT,95,98 ,2000  
MS-Office 97,2000

### Communication

Local Area Network  
Server with a Static IP Address for clients to connect

TelcoBASE has brought in a revolution in the techniques of centralised management. TelcoBASE removes traditional constraints on accessing and delivering information. As with all IMIsoft applications, it has been designed to be flexible, scaleable and more importantly secure.

If you would like more information you can reach us at [sales@imisoft.com](mailto:sales@imisoft.com) or at the address and telephone numbers below.

IMI Software Ltd. is a privately held Software IP Developer and Professional Services Company founded in 1988, with about 130 staff. IMI Software Ltd. is based in Hyderabad India with offices in Delhi, Mumbai, Kuala Lumpur, and London. IMI Software develops software for a worldwide client base related to Utilities, Finance, Property, Healthcare, and Mobility.

Software Applications include Management and Maintenance, Collaboration and Communication, and advanced engineering.

For more information please contact: [sales@imisoft.com](mailto:sales@imisoft.com)

IMI Software Ltd.  
33 Glasshouse Street  
London W1B 5DG  
UNITED KINGDOM.

Tel: +44(0) 207 434 5100  
Fax: +44(0) 207 851 7770

Professional Services Group provides Outsourced Design Team Work, Outsourced R&D, Systems Integration, Configuration, and Training.

IMI Software Ltd. markets its products and services through a variety of channels including direct relationships where appropriate, commercial partnerships such as Business Development Partners, Reseller (IMI and Reseller Branded), and OEM relationships.

Kautilya, 6-3-652,  
Somajiguda,  
Hyderabad-500 082  
INDIA.

Tel: +91 40 331 0233  
Fax: +91 40 331 1643



IMIsoft

